

# TEACHING SCHOOL HUB

## ★ FOCUS ★

### Dear Colleagues

Another warm welcome to the third edition of our Teaching School Hubs (TSHs) Newsletter. It continues to be a busy time as we prepare to move for our 'shadow' to 'live' phase!

As Teaching School Hubs move toward a 'live' start date in September we've continued to work closely with the DfE. We've attended some really thought provoking sessions led by the Education Endowment Foundation (EEF) one of which was 'Critical Engagement with Evidence', developing expert practice in diagnosing professional development needs and ways in which to contextualise national frameworks to meet these needs. Our **golden thread**, including the Early Career Framework and National Professional Qualifications, will be reflective of need. We have begun to work collaboratively with local partners to ensure a strong school-led delivery infrastructure, using local knowledge of context and expertise. Our **golden thread** will be delivered by local and regional experts.

The DfE has begun its communication to schools in relation to the **golden thread** and its reforms to teaching training and development. The Minister of State for School Standards wrote to all schools, describing Teaching School Hubs as the backbone of delivery of these reforms.

Schools are urged to contact their local Teaching School Hub who can provide support and guidance, please do get in touch – we'd be delighted to hear from you.

During one of the most challenging years for schools, it's never been more important to think about how best to support school leaders. As schools look forward and begin to plan strategically for next year, we're delighted to share the launch of our **National Professional Qualifications (NPQs)** for 2021/2022.

"Professional Development is likely to be the most impactful tool at our disposal for improving teacher quality and increasing pupils' learning" (Fletcher-Wood & Zuccollo, 2020)

NPQs have been an important part of developing teachers and leaders for over 20 years, and in this edition of our newsletter we'll share more details on the reformed NPQs.

Behind every great school is a great leadership team.  
We support talented teachers to become inspiring and effective leaders at every level.



Continuing the theme of supporting school leaders, we're thrilled to be working in partnership with Bupa

Foundation to offer a free of charge, Headteacher Wellbeing session.



#### BUPA & BRIGHT FUTURES HEADTEACHER WELLBEING SESSIONS

The Bupa 'Wellbeing for Educators Programme' supports senior leaders to help us all manage our energy levels, particularly when life gets tough. This approach helps us also maintain an improving positive culture in our schools for all staff and children

To book please visit <https://tinyurl.com/97n7rtbh>



SENIOR STAFF IN OUR HUB AREAS OF MANCHESTER, SALFORD, STOCKPORT OR TRAFFORD

5th, 6th or 9th July  
10.00am - 11.30am



We're also in the process of creating a Partnership Advisory Group made up of senior colleagues from our Local Authorities, multi-academy trust (MAT) CEOs, National Leaders of Education (NLEs) and our local school-led delivery partners. The purpose of this group is to bring together representatives of all of the key stakeholders in our Hub areas in a coherent strategic partnership which will work together in the interests of the children and young people in Trafford, Salford, Manchester and Stockport.

As we move toward the end of an academic year like no other, I wish you a successful end to the summer term. Thanks for your ongoing support.

Best wishes,

**Lisa Fathers**  
Director of Development, Partnerships & Teaching School Hubs



**Lisa Fathers**  
Director of Development, Partnerships & Teaching School Hubs



**Eleanor Davidson**  
Deputy Director of Teaching School Hub ECT/ITT Manchester/Stockport



**Jayne Carmichael**  
Deputy Director of Teaching School Hub NPQs/CPD Trafford/Salford

# National Professional Qualifications (NPQs)

Here at Bright Futures Teaching School Hubs for Trafford & Salford and Manchester & Stockport we're delighted to share with you our **National Profession Qualification (NPQ)** offer for 2021/2022. The NPQs will complete the **golden thread** of continuing professional development (CPD) for teachers, from the early stages of teacher development with the Early Career Framework (ECF) through to executive leadership, delivering a new generation of NPQs. NPQs are the most widely-recognised qualifications in the education sector for current and aspiring leaders. We're delighted to be partnered with one of a select group of national providers to design, deliver and assess six reformed NPQs - **Teach First**.



Our NPQ programmes, in partnership with Teach First, are based on the DfE's NPQ frameworks, combining expert training with tailored support to strengthen leadership and culture in schools.

**Teach First**

**Bright Futures**  
TEACHING SCHOOL HUBS  
TRAFFORD & SALFORD MANCHESTER & STOCKPORT

We have a series of NPQ information sessions taking place this half term:

- Wednesday 23rd June 4pm **sold out**
- Tuesday 29th June 4pm **book here >>**

We look forward to seeing you there, it will be a great opportunity for Heads and Senior Leaders to learn more about the reformed suite of NPQs:

<b>NPQ in Leading Teaching (NPQLT)</b>	leading teaching in a subject, year group, key stage or phase	<b>NPQ in Senior Leadership (NPQSL)</b>	a senior leader with cross-school responsibilities
<b>NPQ in Leading Behaviour and Culture (NPQLBC)</b>	leading behaviour and/or supporting pupil wellbeing in their school	<b>NPQ in Headship (NPQH)</b> <small>*NPQH Additional Support offer available for new headteachers</small>	a headteacher or head of school with responsibility for leading a school
<b>NPQ in Leading Teacher Development (NPQLTD)</b>	leading the development of other teachers in their school	<b>NPQ in Executive Leadership (NPQEL)</b>	an executive headteacher or have a school trust CEO role with responsibility for leading several schools



## Specialist NPQs

There are three specialist NPQs for teachers and school leaders who want to broaden their expertise in particular areas. The following programmes are for those who have, or are aspiring to have, responsibilities for leading teaching in a subject or year, leading behaviour and/or supporting pupil wellbeing in their school, or leading the development of other teachers in their school:

- NPQ in Leading Teaching (NPQLT)
- NPQ in Leading Behaviour and Culture (NPQLBC)
- NPQ in Leading Teacher Development (NPQLTD)

## Leadership NPQs

For those looking to progress into senior leadership and beyond, the following NPQs build foundational knowledge to rapidly progress a school or trust's key improvement priorities - all while creating and embedding a culture that allows the school, staff and pupils to thrive:

- NPQ in Senior Leadership (NPQSL)
- NPQ in Headship (NPQH)
- NPQ in Executive Leadership (NPQEL)

You can find out more about the reformed suite of NPQs [here >>](#)



**Leadership Matters**  
 Unlock your potential  
 and the potential of  
 future generations  
 with our NPQs



# CPD Opportunities

The **National Centre for Excellence for Language Pedagogy** (NCELP) has just released details of its CPD offer, with courses starting in January 2022: [www.ncelp.org/cpd](http://www.ncelp.org/cpd). NCELP is encouraging schools to register their interest now ahead of applications opening.

## NCELP | National Centre for Excellence for Language Pedagogy

### Free CPD Course

#### MFL Curriculum Design and Pedagogy

Research-informed French, German and Spanish teaching at KS3 and KS4 for higher uptake and greater success at GCSE

Five **free** 2½ hour remote learning sessions over one term, complemented by online peer and instructor support


- Phonics**  
Unlock the many benefits of phonics: help pupils learn the sound system, sound out accurately, develop confidence in production and much more.
- Vocabulary**  
Explore why word frequency and a secure verb lexicon are key to promoting stronger vocabulary learning, which in turn is key to all language learning.
- Grammar**  
Approach grammar in three phases: explanation, practice in understanding, and practice in production - to allow learners to use grammar quickly.
- Curriculum Design and Assessment**  
Develop Schemes of Work and assessments to best support early stages of language development in our low exposure foreign language setting, aligned to the proposed GCSE MFL subject content.
- Meaningful Practice**  
Understand the meaningful (as opposed to mechanical) practice that learners need: purposeful, frequent, varied (in mode and modality) and incremental.

- ✓ Research-informed approach as set out in [MFL Pedagogy Review](#)
- ✓ Accompanied by [free resources](#) for KS3 and (forthcoming) KS4
- ✓ Aligned with [proposed new GCSE](#)
- ✓ Aligned with [Ofsted Framework](#)
- ✓ Aligned with [Early Career Framework](#)
- ✓ Aligned with [Roshine Principles](#)


#### Places are free but will be limited

Applications will open in 2021 for afternoon or twilight courses running in 21/22 Spring, Summer and 22/23 Autumn Terms. Schools will be asked to nominate one teacher to apply to attend, typically Head of Department or Trust Subject Lead. An open-access online self-study course will also be available for all.

Register interest at [www.ncelp.org/cpd](http://www.ncelp.org/cpd)



**Bright Futures**  
Teaching School Hub  
MANCHESTER & STOCKPORT




**Bright Futures**  
Teaching School Hub  
TRAFFORD & SALFORD

## MENOPAUSE CPD IN PARTNERSHIP WITH NEWSON HEATH


A session to better understand the menopause for yourself or to help you in supporting colleagues.

**Free** to any schools in our teaching school hub areas or in our alliance for learning network

**13 JULY 2021  
3.30 - 5.00PM**



**BOOK VIA:**  
[HTTPS://TINYURL.COM/  
VK8DJZXA](https://tinyurl.com/vk8djzxa)



**“ THE BEST FOR EVERYONE, THE BEST FROM EVERYONE ”**

# CPD Opportunities

Early Career Teachers (ECTs) working in Trafford and Stockport schools can now access a specialist Primary Science Mentoring Programme through a bespoke partnership between Bright Futures Educational Trust and Science and Engineering Education Research and Innovation Hub (SEERIH).



## Trafford Primary Science ECT Mentoring Programme



### **Book your place today!**

#### **Could your ECTs benefit from increased confidence in Primary Science teaching, learning and assessment?**

Early Career Teachers working in Trafford schools can now access a specialist Primary Science Mentoring Programme through a bespoke partnership between Brighter Futures Educational Trust and SEERIH (University of Manchester).

#### **Your ECTs will:**

- Gain improved knowledge and confidence to teach the content of the primary science National Curriculum in their year group.
- Design and manage learning episodes to enable children to work scientifically.
- Gain awareness of and engage with the wider science community within and beyond Trafford and Greater Manchester.

#### **How will the programme be delivered?**

- The programme will commence in September 2021 and conclude in June 2023
- Over 2 years ECTs will attend 6 termly, 2 hour virtual sessions led by a Primary Science Teaching specialist over Zoom with an additional 1 hour preparatory and post meeting activity
- Maximum of 16 delegates per cohort to ensure small group work and support for each delegate
- Progressive, focussed sessions with interactive elements and immediate actions for putting into practise in the classroom.
- An audit of confidence and knowledge to be completed at the beginning and end of the programme
- Feedback and support from the programme leader
- Certification of participation personalised to each ECT with sessions attended detailed

### **Book your place now**

**You must register by Thursday 1st July**

You are welcome to contact us if you have any questions on [fascinate@manchester.ac.uk](mailto:fascinate@manchester.ac.uk)

#### **Become a SEERIH member today!**

Email: [fascinate@manchester.ac.uk](mailto:fascinate@manchester.ac.uk) Follow [@UoMSEERIH](https://twitter.com/UoMSEERIH) Visit the website

# CPD Opportunities



## Stockport Primary Science ECT Mentoring Programme



### **Book your place today!**

#### **Could your ECTs benefit from increased confidence in Primary Science teaching, learning and assessment?**

Early Career Teachers working in Stockport schools can now access a specialist Primary Science Mentoring Programme through a bespoke partnership between Brighter Futures Educational Trust and SEERIH (University of Manchester).

#### **Your ECTs will:**

- Gain improved knowledge and confidence to teach the content of the primary science National Curriculum in their year group.
- Design and manage learning episodes to enable children to work scientifically.
- Gain awareness of and engage with the wider science community within and beyond Stockport and Greater Manchester.

#### **How will the programme be delivered?**

- The programme will commence in September 2021 and conclude in June 2023
- Over 2 years ECTs will attend 6 termly, 2 hour virtual sessions led by a Primary Science Teaching specialist over Zoom with an additional 1 hour preparatory and post meeting activity
- Maximum of 16 delegates per cohort to ensure small group work and support for each delegate
- Progressive, focussed sessions with interactive elements and immediate actions for putting into practise in the classroom.
- An audit of confidence and knowledge to be completed at the beginning and end of the programme
- Feedback and support from the programme leader
- Certification of participation personalised to each ECT with sessions attended detailed

### **Book your place now**

**You must register by Thursday 1st July**

You are welcome to contact us if you have any questions on [fascinate@manchester.ac.uk](mailto:fascinate@manchester.ac.uk)

**Become a SEERIH member today!**

Email: [fascinate@manchester.ac.uk](mailto:fascinate@manchester.ac.uk) Follow [@UoMSEERIH](https://twitter.com/UoMSEERIH) Visit the website

# Spotlight On Curriculum Hubs & Research Schools

We are working collaboratively with **Research Schools** and **Curriculum Hubs** to offer local CPD and networking. As a Teaching School Hub the local CPD we will offer will evolve overtime. There are a range of DfE-accredited Curriculum Hubs who provide high quality training. The Curriculum Hubs bring together subject specialist colleagues to create networks that develop excellent practice for the benefit of pupils.

Research Schools lead the way in the use of evidence-based practice, sharing what they know about putting teaching and learning research into practice, so that it really makes a difference in the classroom. In Trafford & Salford and Manchester & Stockport we are well-served by Research Schools and Curriculum Hubs and we're delighted to provide an oversight of what they each do and how schools can benefit.

## Research Schools and Curriculum Hubs

Organisation	Contact Details
Manchester Research School	kimberly.cunningham@mca.manchester.sch.uk
Turing NW Maths Hub	SarahColdbeck@mathshubsturingnw.co.uk
North West 1 Maths Hub	SMazumder@aggs.bfet.uk
Greater Manchester Science Partnership	M.Wood@stem.org.uk
Greater Manchester Computing Hub	daniel.evans@tameside.ac.uk
Oldham Sixth Form College (EdTech Demonstrator College)	LAY@osfc.ac.uk
The Manchester College (EdTech Demonstrator College)	ScottG@ltegroup.co.uk

### Manchester Communication Research School

We are extremely excited to start work with Bright Futures Teaching School Hubs. As a Research School, our aim is to support schools and teachers to develop evidence-informed practice that will positively impact on outcomes for young people. We believe that developing this approach will ensure that all young people have the best possible chances of success, allowing them to succeed and flourish in their future lives.

We are passionate about providing the highest quality professional development for teachers so that they are able to transfer what we know - and continue to learn - about best practice into their classrooms.

### Training and Support

Our main purpose and aim is to mobilise the evidence into the hands of school leaders and teachers to help to inform their decision making. We do this in a variety of ways:

- Face to face and remote training which is underpinned by the principles of effective implementation
- Signpost, summarise and share new and relevant research, findings from promising projects and EEF guidance reports
- Support schools with Implementation using evidence informed approaches
- Provide coaching and follow up support

Please visit our website [www.researchschool.org.uk/manchester](http://www.researchschool.org.uk/manchester) for more details of upcoming training and events in areas such as improving learning behaviours and effective implementation.

### Meet the Team

**Susie Fraser** - Research School Director  
(susan.fraser@mca.manchester.sch.uk)

**Rebekah Hawthornthwaite** - Research School Assistant Director  
(r.hawthornthwaite@mca.manchester.sch.uk)

**Kim Cunningham** - Research School Administrator  
(kimberly.cunningham@mca.manchester.sch.uk)



We also have an excellent team of Evidence Leads in Education, teachers from across the North West dedicated to delivering quality professional development within their specialist areas.

### The Research

Our work is informed by the Education Endowment Foundation (EEF), an independent grant-making charity dedicated to breaking the link between family income and educational achievement.

Their research has been synthesised into a range of useful resources for teachers and school leaders, including their Teaching and Learning Toolkit and a range of guidance reports including:

- Metacognition
- Literacy
- Behaviour
- SEND
- Feedback





Maths Hubs Turing NW supports schools in Salford and Trafford across all phases. We are currently recruiting schools to participate in the following fully funded CPD 2021/22 programmes.

#### Primary

**Mastering Number** - brand new nationwide Maths project with limited places to support COVID recovery in Reception, Year One and Year Two.

**Teaching for Mastery Development** - joining a Teaching for Mastery Work Group (TRG) is a professional development opportunity designed to support schools to develop best practice in Maths. It is suitable for schools interested in implementing a teaching for mastery approach to Maths.

**Specialist Knowledge** - develop subject knowledge (for teachers, EYFS, TAs and Early Career Teachers).

#### Secondary

**NEW for 2021/22** - Specialist Knowledge for Teaching Maths - for Early Career Teachers

**NEW for 2021/22** - Specialist Knowledge for Teaching Maths - Secondary non-specialist teachers

We are also looking for Secondary Work Group Leads for the next academic year. If you are a passionate practitioner keen to support others in Maths please contact us!

For further information: <https://mathshubsturingnw.co.uk> or email [enquiries@mathshubsturingnw.co.uk](mailto:enquiries@mathshubsturingnw.co.uk)



North West 1 Maths Hub supports schools in Manchester and Stockport across all phases. We are currently recruiting schools to participate in the following fully funded CPD 2021/22 programmes.

#### Primary

**Mastering Number** - brand new nationwide Maths project.

**Mastery Readiness** - start your mastery journey.

**Specialist Knowledge** - develop subject knowledge (for teachers, EYFS, TAs and Early Career Teachers).

#### Secondary

**NEW for 2021/22** - specialist Knowledge for Teaching Maths - for Early Career Teachers

**NEW for 2021/22** - specialist Knowledge for Teaching Maths - Secondary non-specialist teachers

For further information: [www.nw1mathshub.co.uk](http://www.nw1mathshub.co.uk)





## Greater Manchester Science Learning Partnership

Greater Manchester SLP have lots of remote and face to face CPD taking place in the Summer term that will help you and your faculty to ensure that your curriculum is Ofsted ready and, most importantly, challenges and engages all students.

As well as our regional courses we can also offer bespoke CPD for your school which is designed to meet your departments specific needs. Please contact Natalie Hewitt, SLP Lead [n.hewitt@gmslp.co.uk](mailto:n.hewitt@gmslp.co.uk) or the SLP Administrator [slp@hhhs.net](mailto:slp@hhhs.net)

### Support for those new to teaching

We support those new to teaching in primary and secondary science through our SCITT programmes and also our early career networks and conference. Our SCITT programmes can be tailored to meet your specific needs and are available remotely or face to face.

### Subscribe to our Primary Science Networks

The networks are a compilation of subject leader meetings and subject knowledge CPD sessions. They give subject leaders a chance to learn about the latest local and national initiatives in science and keep ahead of developments within the subject and also support their staff with a series of stage-specific CPD sessions to improve curriculum and progression in science. These networks can be offered remotely and face to face.

### What's on offer for the Summer term?

**Embedding assessment for responsive teaching** – 15<sup>th</sup> June 2021, 3:15-4:45pm

**Rapid intervention to help disadvantaged students catch up in science** – 23<sup>rd</sup> June 2021, 3:30-5pm

**Subject knowledge enhancement: Physics triple science** – 24<sup>th</sup> June, 28<sup>th</sup> June and 5<sup>th</sup> July 2021

A series of sessions to help you develop the background subject knowledge required to help planning and teaching physics for key stage 4 (Triple Science).

**Making powerful connections in primary science - Outdoor learning** – 25<sup>th</sup> June 2021, 12:45-3:45pm

**Practical work series for early career teachers** - Biology – 30<sup>th</sup> June 2021, 9:30-12:30pm, Chemistry – 30<sup>th</sup> June 2021, 1:30-4:30pm, Physics – 1<sup>st</sup> July 2021, 9:30-12:30pm

These subject specific face-to-face sessions will allow Early Career Teachers to develop knowledge and confidence in a range of class practical's whilst picking up helpful teaching tips.

**Preparing for a deep dive in secondary science** – 30<sup>th</sup> June 2021, 2-4:30pm

**Returning to practical work post school closures** – 7<sup>th</sup> July 2021, 2:30-4pm

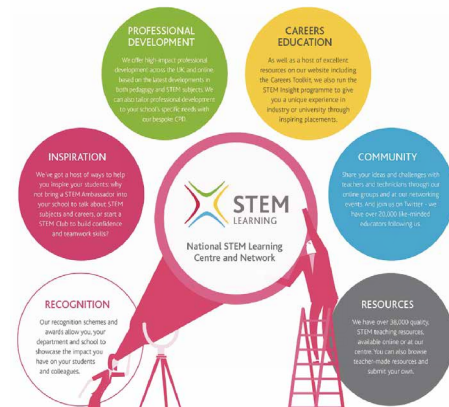
**Maths in the secondary curriculum** – 12<sup>th</sup> & 20<sup>th</sup> July 2021

A series of remote sessions to develop your teaching of key areas of mathematics in the science curriculum.

**Rapid intervention to support AO2/AO3 within the science curriculum** – 13<sup>th</sup> July 2021, 2:30-4pm

**The importance of thinking and talking in primary science** – 13<sup>th</sup> July 2021, 3:45-5pm

**CLEAPSS Radiation Protection Supervisor** – 6<sup>th</sup> October 2021, 9:30-3:30





The **STEM Ambassador programme** enriches the curriculum by providing volunteers (Ambassadors) to help teachers and students understand the real world applications of what they are learning. This not only helps schools to meet the **Gatsby benchmarks** but increases pupils' science capital, which encourages them to consider STEM subjects in an informed way for further study and a career.

Ambassadors can support the teacher and school, as well as directly engage with students to support with activities, information sessions, mentoring and helping link curriculum to local market information, national and international industries. Before the end of July 2021 we can offer:

- Free workshop on how to set up and run a STEM Club – 2 hours, min 6 attendees (Online)
- Free workshop on enhancing employability skills and careers knowledge – 2 hours, min 6 attendees (Online)
- STEM Ambassador Speed networking session – this can be themed for any area of STEM – 1 hour, min 10 attendees (Online)
- Lightning talk on the STEM Ambassador programme (could be 10 minutes as part of a staff meeting, or teaching session) (Online)

If you are interested, please email [Sammia.Amir@ScienceAndIndustryMuseum.org.uk](mailto:Sammia.Amir@ScienceAndIndustryMuseum.org.uk)

Operating out of Tameside College, the Greater Manchester NCCE Computing Hub has a range of support and courses available to develop computing pedagogy and subject knowledge. The majority of courses attract generous bursaries, or a fully funded depending on individual school circumstances, so get in touch to find out more.

Dan Evans leads the hub and is available to discuss individual teacher needs, department objectives or whole MAT computing strategies to enable pupils to receive a world-leading computing education. E: [daniel.evans@tameside.ac.uk](mailto:daniel.evans@tameside.ac.uk)



The Greater Manchester Hub can run courses based on your needs and on dates most convenient for your school, and upcoming courses include:

<a href="#">Fundamentals of computer networks</a>	18 <sup>th</sup> June 2021 - 09:00 – 14:45
<a href="#">Search and sort algorithms - remote</a>	25 <sup>th</sup> June 2021 - 09:00 – 14:10
<a href="#">Python programming: advanced subject knowledge, implementation and testing - remote</a>	7 <sup>th</sup> July 2021 - 09:00 – 14:45
<a href="#">Key stage 3 computing for the non-specialist teacher - remote</a>	14 <sup>th</sup> July 2021 - 09:00 – 13:33
<a href="#">Representing algorithms using flowcharts and pseudocode - remote</a>	21 <sup>st</sup> July 2021 - 09:00 – 14:15
<a href="#">Python programming: advanced subject knowledge, implementation and testing</a>	28 <sup>th</sup> July 2021 - 09:00 – 14:45
<a href="#">An introduction to computer systems, networking and security in computer science</a>	30 <sup>th</sup> July 2021 - 09:00 – 13:48
<a href="#">Up North Computing Festival</a> – virtual week of short free sessions for all teachers interested in digital.	5 <sup>th</sup> – 9 <sup>th</sup> July 2021



## EDTECH

Demonstrator Programme

The EdTech Demonstrator Programme was developed by the Department for Education to ensure schools and colleges across England could **access free, expert advice on educational technology**. The programme launched shortly before the Covid19 pandemic enforced an extended period of remote teaching and learning in the Spring of 2020.

The programme is now in its second year and has evolved from crisis response to offer support to schools and colleges in developing digital strategies which make effective use of technology to enhance teaching and learning.

- In 2020-21, 4,000 schools and colleges across England benefited from support, with over 200,000 classroom staff and 2 million learners having been helped to implement and access remote learning. We are ambitious to match this impact in 2021-22. The EdTech Demonstrator Programme provides peer-led support delivered by experts who are teaching and leading in recognisable contexts.
- The network of 43 demonstrators is spread across England and schools and colleges will work with a demonstrator, based on the specialist nature of the support required. To find tailored support relevant to your needs, you can register your interest or read all about our local EdTech demonstrators:



For more info about Oldham Sixth Form College [click here >>](#)

For more info about The Manchester College [click here >>](#)



## Next Steps

Over the coming weeks we will continue to provide updates and information sessions for our schools and partners.

We will be holding further virtual information events, here are some dates for your diary:

### NPQ Information Sessions

- Wednesday 23rd June 4pm **sold out**
- Tuesday 29th June 4pm **book here >>**

## Keeping in touch...

Please do keep in touch with us via the following Hub email addresses and twitter accounts:



TSHubTS@Bfet.uk  
TSHubMS@Bfet.uk



@tshub\_ts  
@tshub\_ms

## Just launched...

We're working hard behind-the-scenes to bring you two amazing websites for Teaching School Hub Trafford & Salford and Teaching School Hub Manchester & Stockport. Both sites are live but very much 'under construction', however, you will still find loads of useful information including details about our packages and offers, FAQs and upcoming events.

Visit [www.tshtraffordandsalford.bfet.uk](http://www.tshtraffordandsalford.bfet.uk) and [www.tshmanchesterandstockport.bfet.uk](http://www.tshmanchesterandstockport.bfet.uk)

